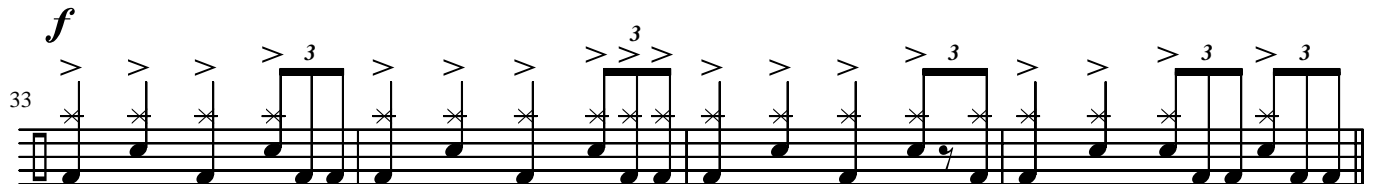
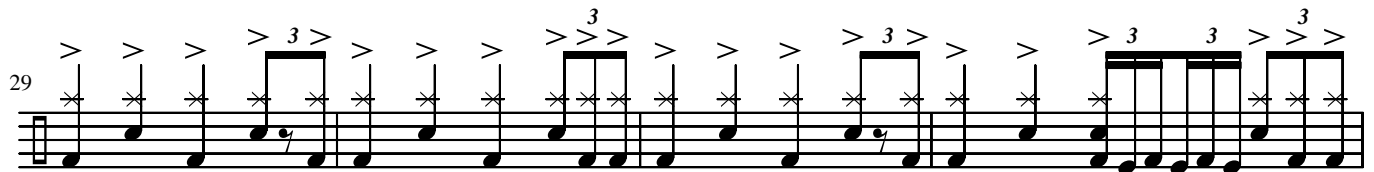
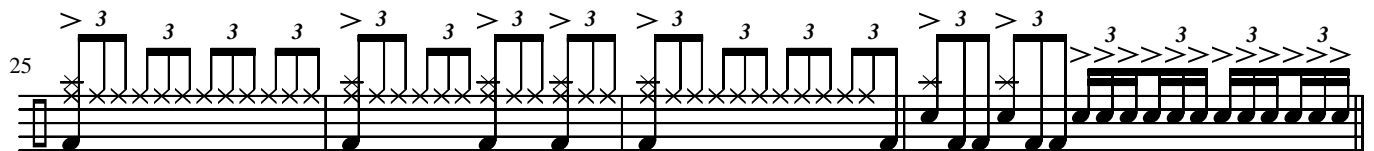
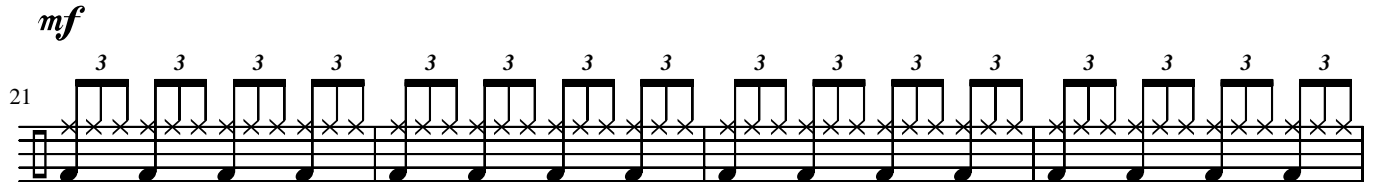
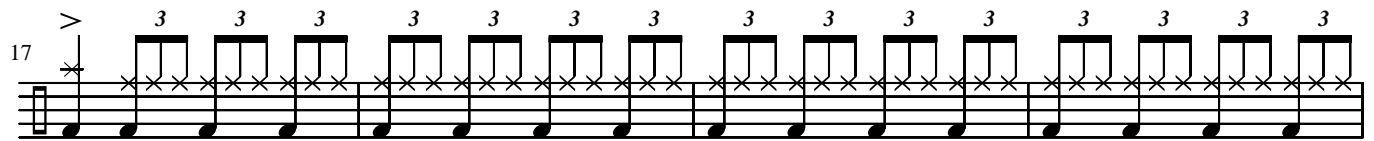
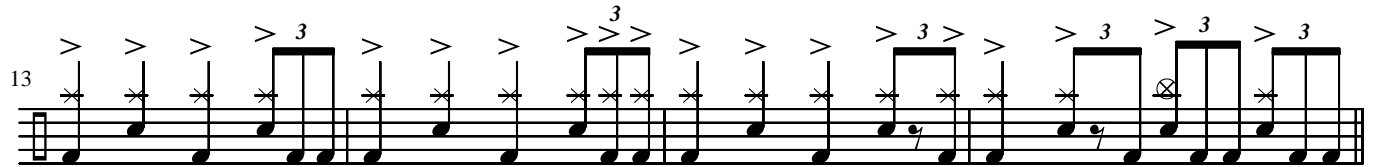
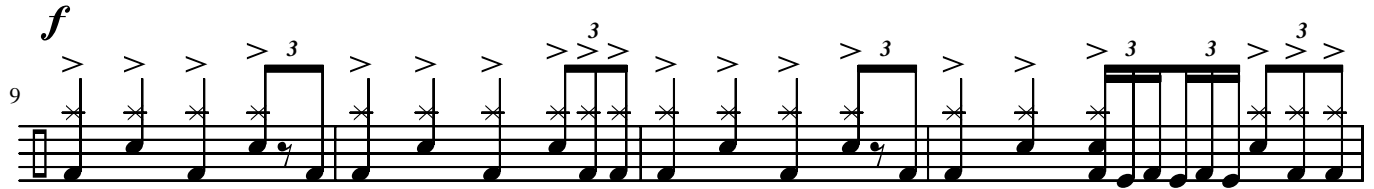
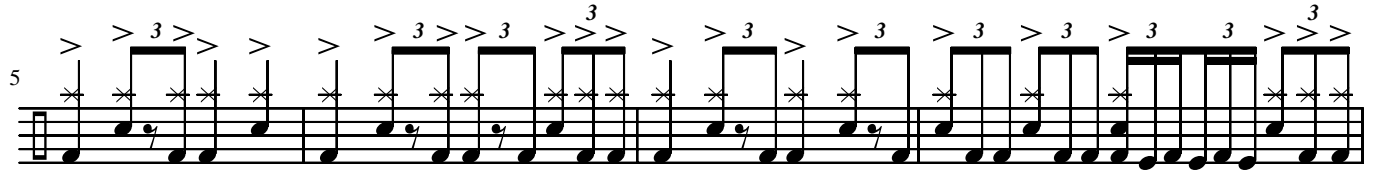
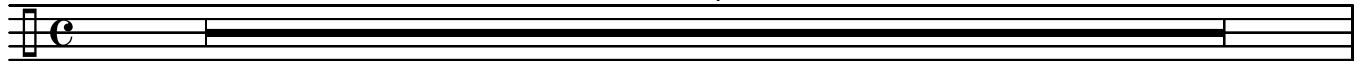


B****

Recorded by Rammstein
Drums: Christoph Schneider

♩ = 94

4



37 Musical staff starting at measure 37. It features a series of triplets of eighth notes, each with an accent (>) above it. The notes are beamed together. The staff is on a single line with a clef.

mf

41 Musical staff starting at measure 41. It continues with triplets of eighth notes, each with an accent (>) above it.

45 Musical staff starting at measure 45. It features triplets of eighth notes with accents (>) above them. Some triplets have a '3' above them.

49 Musical staff starting at measure 49. It features triplets of eighth notes with accents (>) above them. Some triplets have a '3' above them.

53 Musical staff starting at measure 53. It features triplets of eighth notes with accents (>) above them. Some triplets have a '3' above them. The dynamic marking *f* is present.

57 Musical staff starting at measure 57. It features triplets of eighth notes with accents (>) above them. Some triplets have a '3' above them.

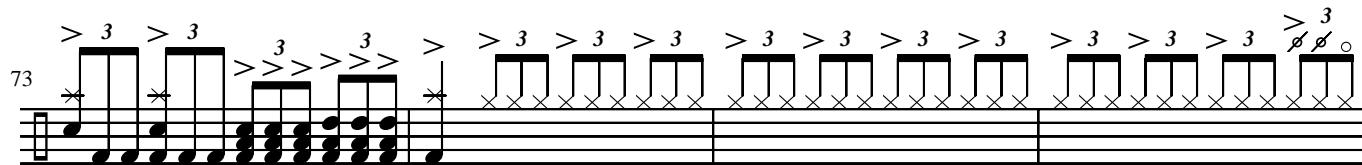
mf

61 Musical staff starting at measure 61. It features triplets of eighth notes with accents (>) above them. Some triplets have a '3' above them.

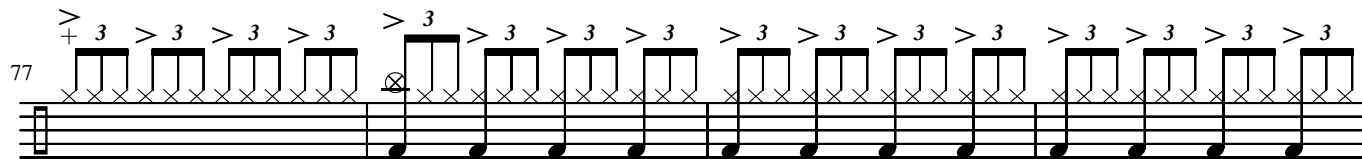
65 Musical staff starting at measure 65. It features triplets of eighth notes with accents (>) above them. Some triplets have a '3' above them. Some notes have circled 'X' marks.

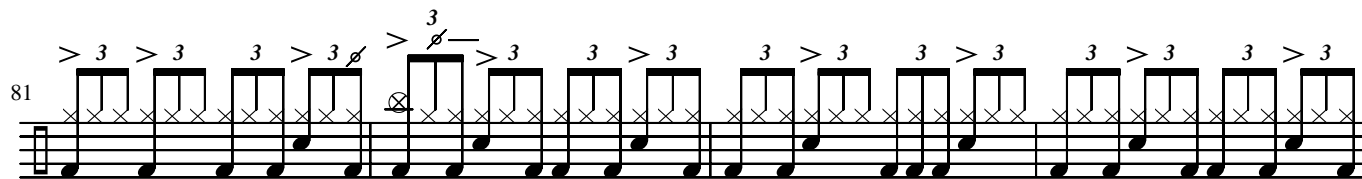
f

69 Musical staff starting at measure 69. It features triplets of eighth notes with accents (>) above them. Some triplets have a '3' above them. Some notes have circled 'X' marks.

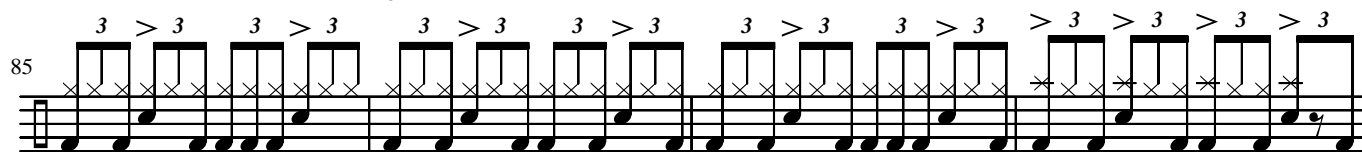
73 

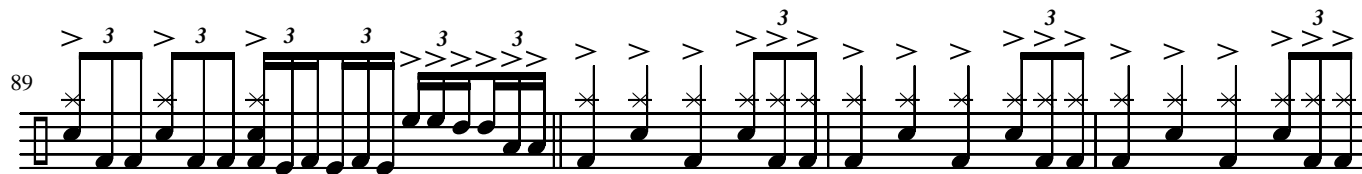
mp

77 

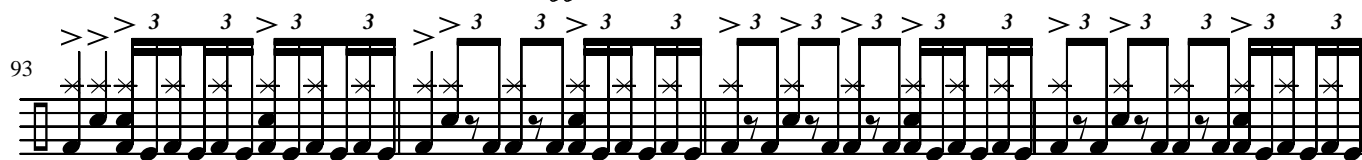
81 

mf

85 

89 

ff

93 

97 